



Draft: Survey Review and Map Exercise

- Review the map
- Review the draft map and provide comments



# MATI Workforce Transportation Advisory Committee

December 4, 2024

# Welcome & Introductions

# Ice Breaker Questions

[PollEv.com/ablewinds5310](https://PollEv.com/ablewinds5310)



What was your first job?

Nobody has responded yet.  
Hang tight! Responses are coming in.

## How did you get to your first job?

Walked

0%

Drove a car

0%

Got a ride from family or friends

0%

Rode the bus

0%

Bicycled

0%

Some other way

0%

# MOBILITY, ACCESS & TRANSPORTATION INSECURITY: *Creating Links to Opportunity Program*



## **Award Recipient Team Leads**

1. Boston Region Metropolitan Planning Organization (Boston, MA)
2. City of Arlington (Arlington, TX)
3. Cumberland County Public Health (Portland, ME)
4. Hawai'i Appleseed Center for Law and Economic Justice (Oahu, HI)
5. Richland County Transit Board (Mansfield, OH)
6. San Joaquin Council of Government (San Joaquin, CA)
7. SENIOR Solutions (Anderson, SC)
8. University of Illinois-Chicago (Chicago, IL)

# Workforce Transportation Plan

- ✓ RCT, NECIC & partners secured a MATI planning grant
- ✓ One of 8 urban areas chosen
- ✓ Competing for 4 implementation grants in year 2 (up to \$750k)



# Workforce Transportation Plan

Goal = Pilot plan for late evening, early morning service

Focus on

- Helping people with transportation barriers get to work
- Reducing employee turnover



# Workforce Transportation Plan

- RCT urban transit provider
- NECIC community engagement partner
- RLS & Associates transit consultants
- In partnership with:
  - Area 10 Workforce Board
  - Regional Manufacturing Coalition
  - RC Job & Family Services
  - RC Regional Planning




# Richland County Transit Development Plan

- Outlines transit improvement strategies over 10 years (2024-2033)
- Informed by robust community input collected in 2022-2033
- RCT has already implemented initial strategies




# Richland County Transit Development Plan


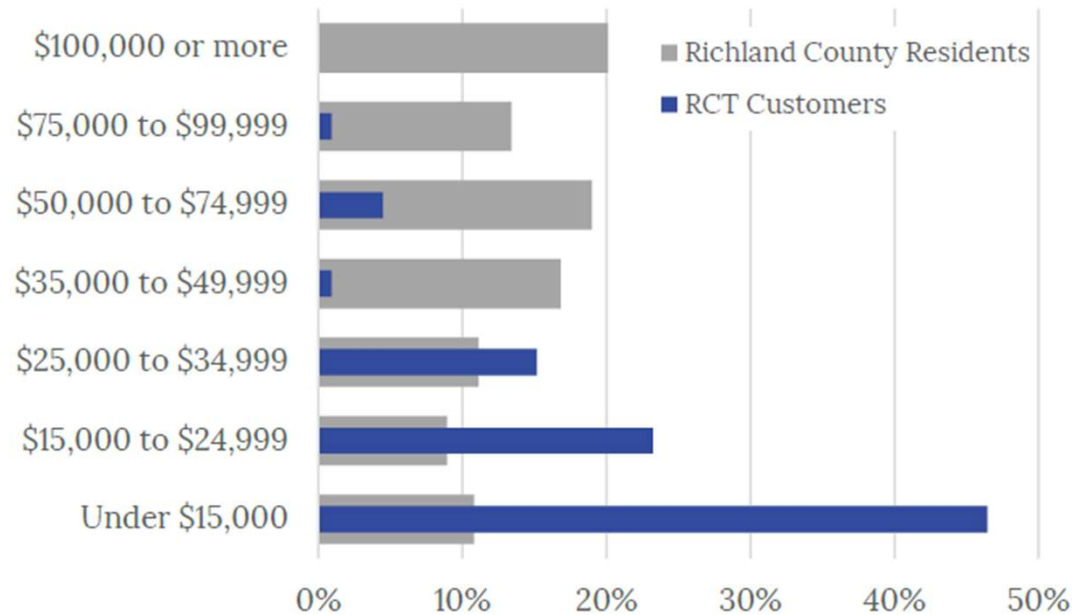
Over half of RCT fixed route customers are older adults or individuals with disabilities



More than one-third of RCT customers use the service to go to work



84 percent of RCT customers have annual household incomes of less than \$35,000

# Richland County Transit Development Plan

- Challenges with serving 2<sup>nd</sup>/3<sup>rd</sup> shift
  - Current service hours
  - Cost of extended fixed route hours
- After-hours & early morning, point to point service pilot
  - Advance reservation or on-demand
  - Limited to specific zone(s)



Where should the pilot service focus on taking workers to?

 0

Nobody has responded yet.  
Hang tight! Responses are coming in.

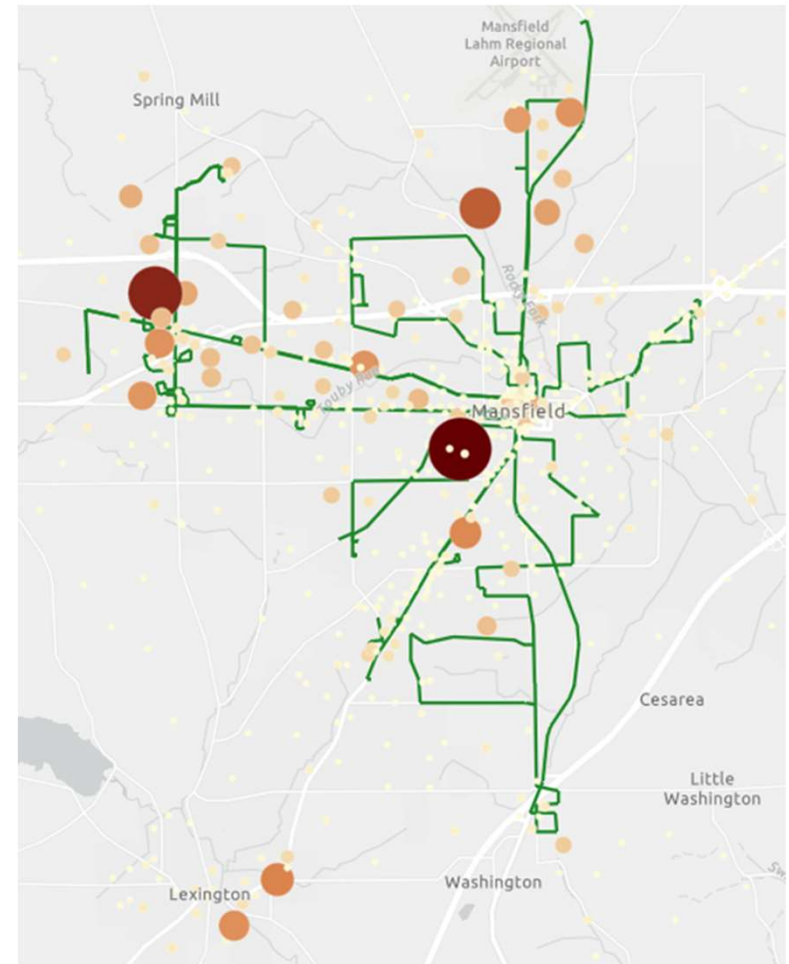
What neighborhood(s) should we pick up workers from?

 0

Nobody has responded yet.  
Hang tight! Responses are coming in.

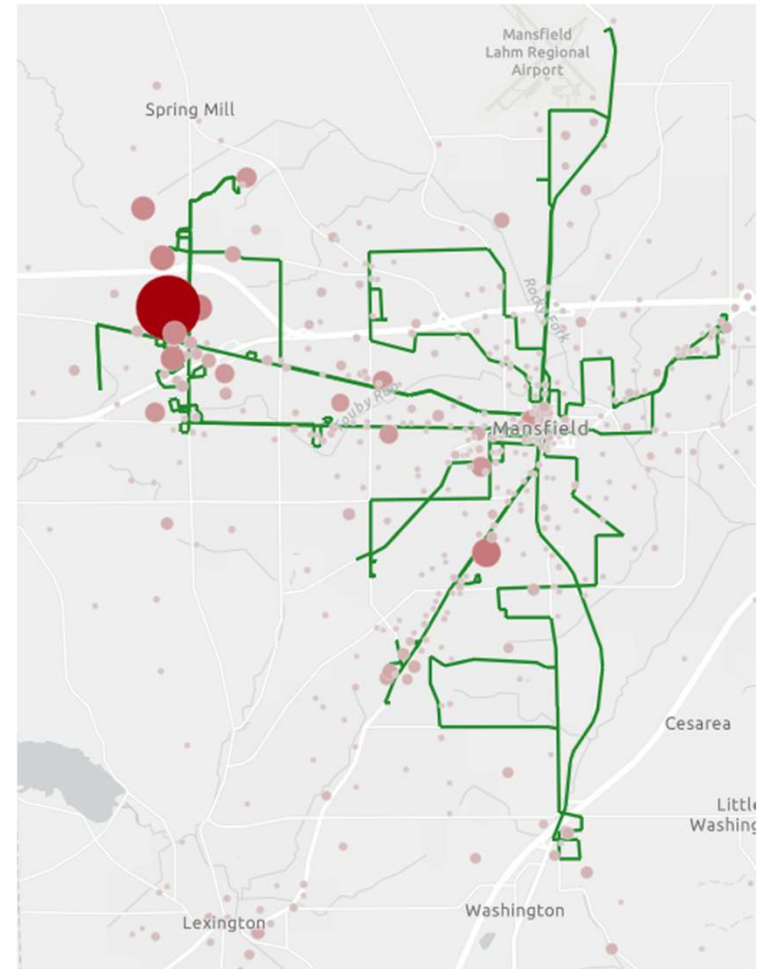
# Employment Data

- Map shows job counts by Census blockgroup
- High-employment areas include Ontario, Mansfield Hospital, Airport
- Green lines = RCT routes



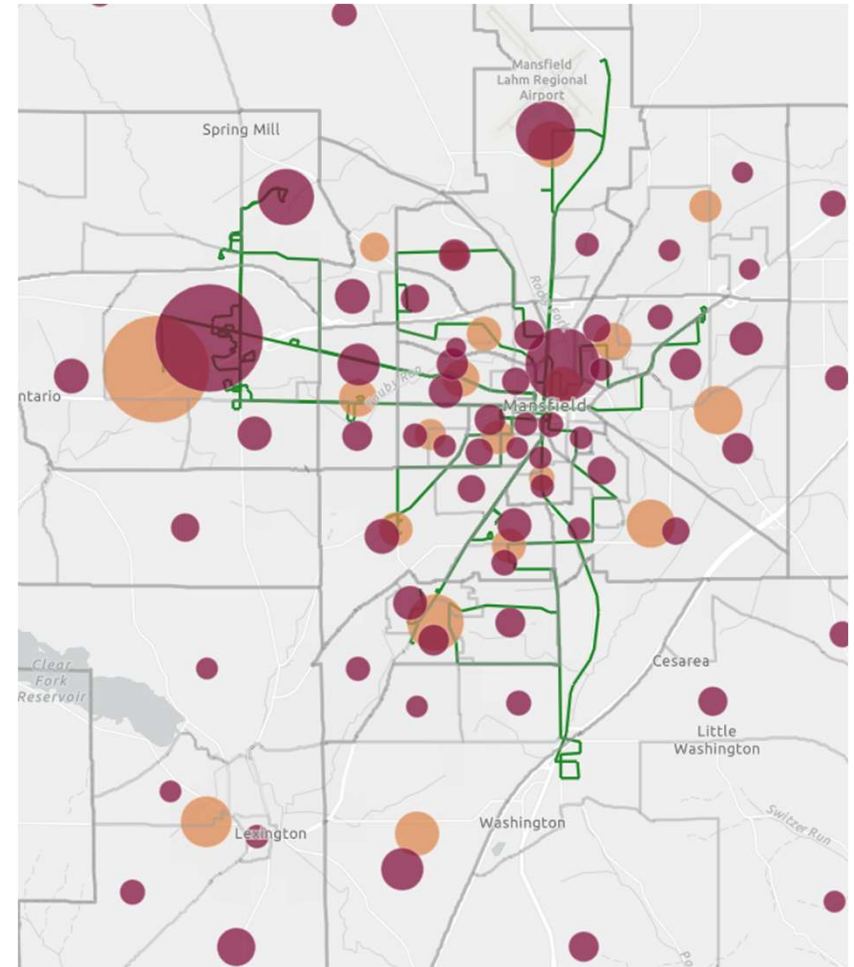
# Low-Income Employment Data

- Map shows job counts by Census blockgroup of those earning **\$1,250/month or less**



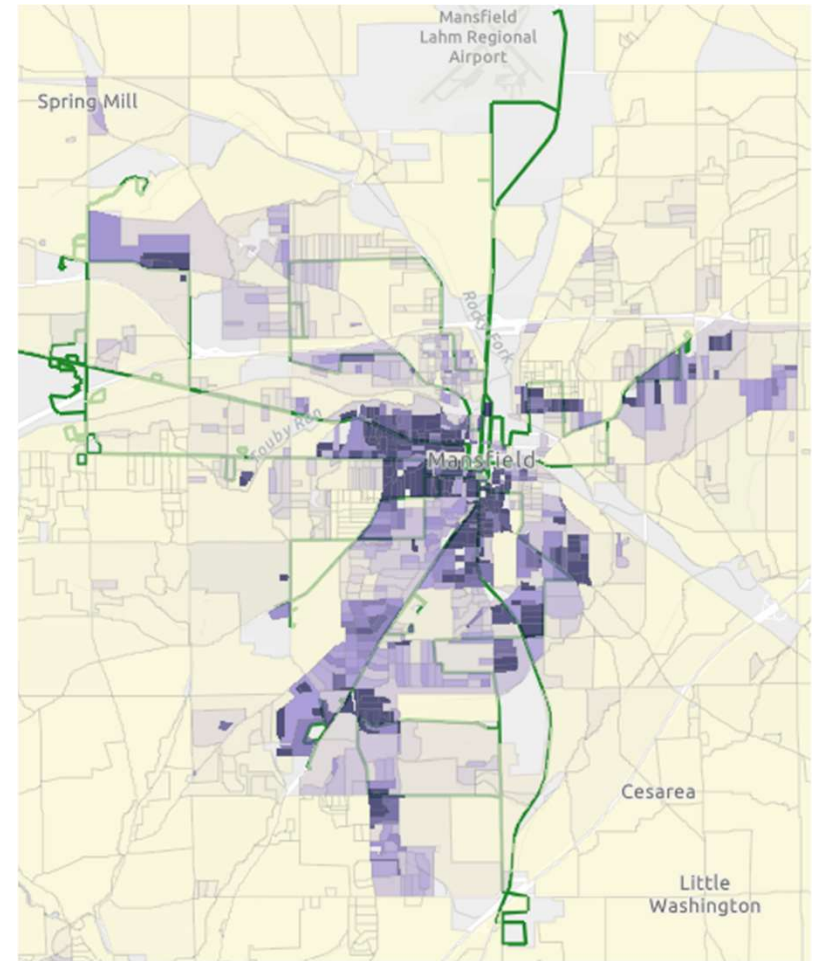
# Work Trips after 7pm

- Map shows work trip origins and destinations by Census blockgroup
- Approximately 300 trips to and from Ontario between 7p and 12p



# Zero-Vehicle Households

- The darkest shaded areas are Census blocks with highest densities of zero-vehicle households
- North End and Downtown have some of the highest rates of zero-vehicle households (11-12%)



What are 3 employers whose workers would benefit from this service?

 0

Nobody has responded yet.

Hang tight! Responses are coming in.

# Discussion

- What are your workforce needs and priorities?
- What are the challenges and barriers for individuals getting and keeping jobs?
- How could changes to local transportation options help?
- Does childcare play a role? How?
- What other comments or suggestions do you have regarding workforce transportation?



# Surveys

- Public (*Please share with your employees or clients*)
- Employers & Officials
- Human Service & Educational Agencies

# Next Steps

- ★ Please complete and return your survey.
- ★ Share the survey QR codes with others who can benefit.
- ★ All surveys are due by 12/31/24.

Thank you!

# Contact Info

Jean Taddie - [jtaddie@rcrpc.org](mailto:jtaddie@rcrpc.org)

Deanna West-Torrence - [deanna@necic-ohio.org](mailto:deanna@necic-ohio.org)

Christy Campoll - [ccampoll@rlsandassoc.com](mailto:ccampoll@rlsandassoc.com)