

HARMONY HOUSE HOMELESS SERVICES, INC.

Proposal for New Shelter Plus Services Campus



BUILDING FRONT

4500 sq ft.

30' x 150'

One front door with windows

Three rear doors with windows

54 beds at full capacity



NO WINDOWS ON THE SIDE
PARKING LOT BELONGS TO THE REN



BUSINESS END

Two offices for Executive Director and Program Director

Two cubicles for Reception and Housing Coordinator

Cumbersome traffic flow

No meeting space



UPSTAIRS KITCHEN

Clients are responsible for preparing meals and feeding their families

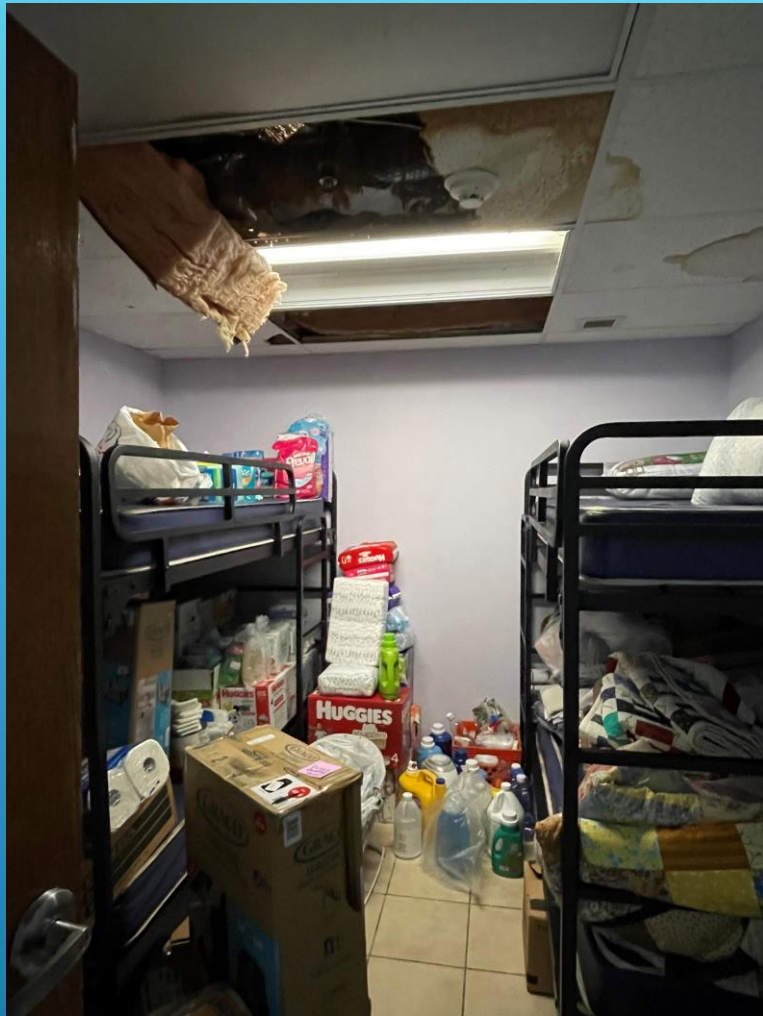
Free access to pantry, refrigerator, freezer

100% of food is donated

80% of supplies are donated



PLAYROOM AND LAUNDRY ROOM ON MAIN FLOOR



TYPICAL CLIENT ROOM 10' X 12'



CURRENT CLIENT-OCCUPIED ROOM

Female resident with 9-month-old child

Pre-COVID would see 4 adults with all their belongings living in this room

9 rooms like this on the main floor with 4 private bathrooms



STORAGE, CASE MANAGER OFFICE, AND CLIENT LIVING ROOM

Storage of supplies and donations have overrun the storage area, leaving the living room unusable

Tiny Case Manager office barely has room for clients to meet



MENS' FLOOR DORMITORY (22 BEDS)
AND KITCHEN AREA



MENS' BATHROOM AREA AND LAUNDRY

3 private bathrooms

Washer and dryer



MENS' LIVING AREA, BUSINESS AREA, CASE MANAGER OFFICE

Storage area off Case Manager's Office full of donations, supplies, and food

Windows Broken

Door does not lock



MENS' ENTRANCE

Back porch, smoking area, only entrance/exit for downstairs

Wooden ramp in disrepair with loose boards

Building abuts property line at Ren parking lot

REPAIRS AND EXPENSES

In 2021, we spend \$87,577 on :

Windows

Roof Patching

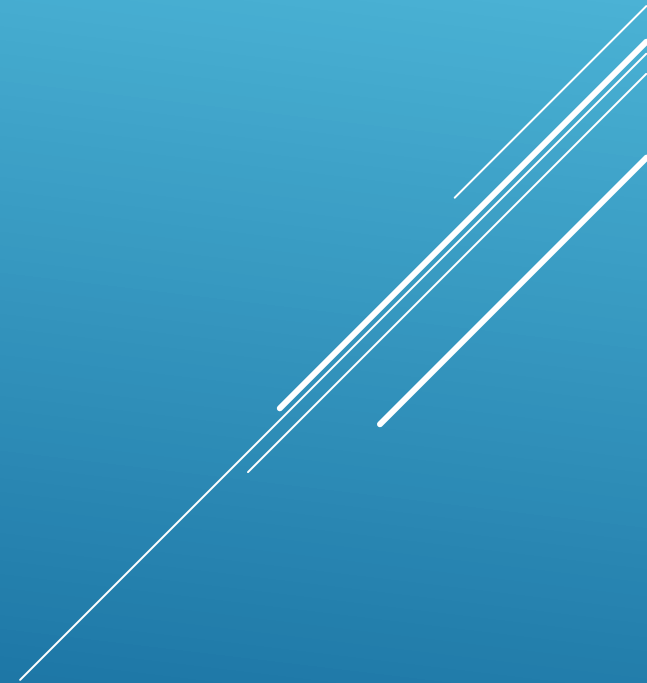
Doors

Ceiling Tiles

Metal Beds and Dressers

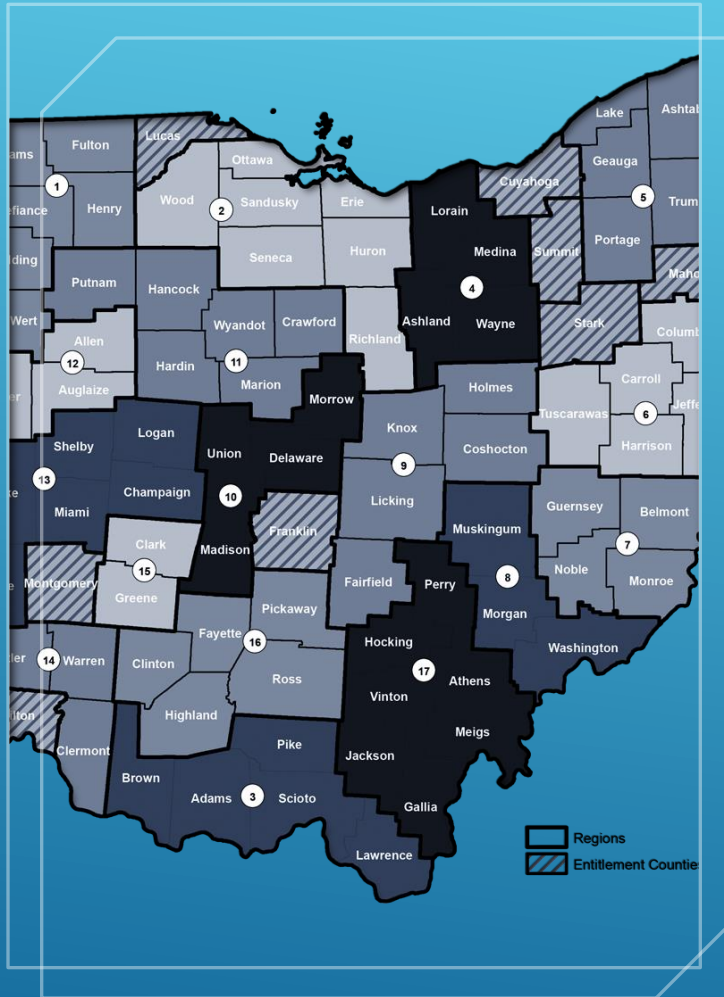
Refrigeration and Commercial Stove

Constant Plumbing Issues with Toilets, Sinks, and Tubs



	2018	2019	2020	2021 (6 mo)
Total Clients	579	621	462	238
Number of Adults	80%	87%	81%	85%
Families	79%	83%	72%	76%
Gender	54% men	53% men	50% men	56% men
Race	62% White	65% White	64% white	65% White
Age (18-44 yrs) Majority b/w 25-34	54%	55%	59%	59%
Average Length of Stay (days)	25	33	31	24
Exit to Permanent Destination	55%	50%	38%	29%

- * 2019 POLICY CHANGE REGARDING FAMILIES
- * 2020 COVID RESTRICTIONS
- * HOUSING SHORTAGE



HOMELESS PLANNING REGION 2

Wood, Ottawa, Sandusky, Seneca, Erie, Huron, and Richland County

Harmony House has > 50% of the homeless beds in the entire region

Clients originate from surrounding counties, major metropolitan areas in OH, and out of state

“LASTING FREEDOM FROM HOMELESSNESS IS POSSIBLE.”

- ▶ Providing the full treatment our homeless neighbors deserve through onsite housing and essential support services.
 - ▶ Individuals experiencing homelessness need access to support and resources that will help them address the issues at the root of their homelessness, but their homelessness makes getting connected with the necessary resources difficult. We are building a campus-style facility to combine emergency housing with essential support services so individuals in crisis can receive the full treatment they need to reclaim their lives.
- 
- A decorative graphic consisting of several parallel white lines of varying lengths, slanted diagonally from the bottom right towards the top right, set against the blue background.

Current Features

- ▶ 54 beds
- ▶ Case Management is limited
- ▶ No Meeting Space
- ▶ Cramped Facility in disrepair
- ▶ Obtaining services difficult because of various locations and transportation issues

Future Services

- ▶ 100 beds in Phase 1 with the possibility to double that later
- ▶ Medical/Dental/Substance Abuse/Mental Health
- ▶ Classroom/Computer Lab
- ▶ Workforce Development/Thrift Store
- ▶ Childcare
- ▶ Transitional Housing
- ▶ Permanent Supportive Housing

MEDICAL BUILDING AND DAY CARE WILL
BE OPEN TO MANSFIELD COMMUNITY

Interested Partners

- ▶ Third Street Family Health Services
- ▶ Mansfield Richland County Public Library
- ▶ Day Care

Funding Sources

- ▶ City/County/CDBG
- ▶ State Capital Budget for 2022
- ▶ ODSA for Increased Capacity
- ▶ Federal Infrastructure through Senator Sherrod Brown
- ▶ New Market Tax Credits
- ▶ Private Investors/Foundations

WE NEED THE LAND COMMITMENT TO
SEEK FUNDING