

Westinghouse: The A Building

Proposal for Preservation Mitigation

The RICHLAND COUNTY
HISTORICAL SOCIETY



Preservation Mitigation

106

By law, members of the public have a voice when federal actions will affect properties that qualify for the National Register of Historic Places, the nation's official list of historic properties.

Historical Significance

Criterion A:
Association with
Westinghouse
Manufacturing in Mansfield
Women's history in the
workforce

Mitigation

A Memorandum of Agreement (MOA) or Programmatic Agreement (PA), which records the resolution measures agreed upon to resolve adverse effects, is developed in consultation and executed prior to approval of the project.

City of Mansfield Preservation Plan



A. INDUSTRIAL DEVELOPMENT

Early industrial development in Mansfield was mainly local in nature. It included the types of industries that served the local population and the surrounding agricultural area. Included were grist and saw mills which processed the abundant grains and lumber of the surrounding county; and lumber mills and small industries producing wagons, buggies, furniture and harnesses for the local population. By the late 1820s, the city had sawmills, cabinet makers, a pottery, carding mills, and a tanner. Surplus goods were carted by horse and wagon north to Lake Erie ports.

This local focus began to change significantly in the 1840s and through the mid- to late 19th century. Early industrial development reflected the city's location in a prime agricultural area, and it became known as a major manufacturer of farm implements.

The first large industry was the Mansfield Machine Works, established in 1840 to produce engines, plows, and saws. The introduction of rail transportation to Mansfield in the 1840s and 1850s spurred the establishment and growth of a number of other industries, such as flour and woolen mills.

Farm implements continued as a major industry with the 1866 founding of the Altman and Taylor Company. By the 1870s, this firm was one of the world's largest producers of threshers and steam engines, as well as Mansfield's largest employer. A third farm implement company was established in 1874, and yet another major industry of this period was the Crawford and Zellers Cracker Works.

By the late 19th and early 20th centuries, the city had a diversified industrial base, which now included the production of stoves. The Baxter Stove Company was the first company of its type and operated from 1883 to 1916. It was followed by the Tappan Stove Company, which started in Bellair in 1869 and moved to Mansfield in 1889. The third major appliance manufacturer in Mansfield was Westinghouse, which opened its headquarters in the old Baxter Company plant in 1918. The company quickly became a major industry, employing 600 workers within one year. Other late 19th century industries included Ohio Brass Company, established in 1888, and the Mansfield Brass Foundry Company, started in

1892. Ohio Brass became a leader in the trolley and street railway industry and was Mansfield's largest employer at the turn of the 20th century. In 1898 the Crawford and Zellers Cracker Company became part of the National Biscuit Company (Nabisco).

The city also was home to several pump manufacturers, beginning in 1895, and was known as "the pump capital of the world." Two firms producing electrical controls were established in the early 1900s and in 1912 two new industries came to Mansfield: Mansfield Tire and Rubber and Mansfield Sheet and Tin Plate Company.

While the Great Depression affected the entire country, Mansfield fared better than many communities because of its diversified industrial base. The conversion of Mansfield industries to World War II production brought additional jobs and prosperity to many industries. For example, the Tappan Stove Co. turned out 45 different products for the war effort, winning several awards. Employment at Westinghouse reached 8,000 during this period.

30

In the post-war period, Mansfield remained an important industrial center in North Central Ohio. Many of its late 19th and early 20th century industries continued to prosper, including Tappan, Ohio Brass, Mansfield Brass and Aluminum, Artesian Company, Empire-Detroit Steel, Ideal Electric, Hartman Electric, and Westinghouse. The oldest industry in the city during this period was the Artesian firm, producers of plumbing fixtures, which was founded in 1882. Both Tappan and Westinghouse benefited from the post-war housing boom through production of modern home appliances, including the electric range, introduced by Tappan in 1951.

By the turn of the 21st century, the industrial landscape in Mansfield had permanently changed. Many of its large industries had been sold, closed, or relocated. Among these were Mansfield Tire & Rubber Company, Ohio Brass Company, Westinghouse, Tappan, and several others. The AK Steel plant remains the last heavy industry in Mansfield today. Smaller industries include Honda supplier Newman Technology Incorporated, Therm-O-Disc (thermostat manufacturer), Gorman-Rupp Company (pumps), and Crane Plumbing (plumbing fixtures).



31



The A Building

1919

Cozy Glow

Westinghouse



© 1916, W. E. & M. Co.

COZY

GLOW



COZY GLOW

Here's Balm in Gilead for the coldest blooded pirate that ever trod a floor. Envelops you in torridity from foot to beaming physiognomy. Built on the assumption that winter comes every year—and lasts a long, long time.



COZY GLOW, JR.

In smaller corners, and around smaller people, Cozy Glow Junior lays down a heat barrage. A true chip off the old block—with a big chip off its price. Can be hung on the wall like a miniature sun, if you don't want it sitting on the floor.



SOLAR GLOW

Solar Glow is a heater—accent on the heater—that literally hurls heat rays. Can be built into, or screwed onto, the bathroom wall. The heating element is arranged that, when lighted, it represents the play of tiny flames. The pure white enameled finish enhances the appearance of the finest bathroom.

Cozy Glow

The Heater



The Marketing

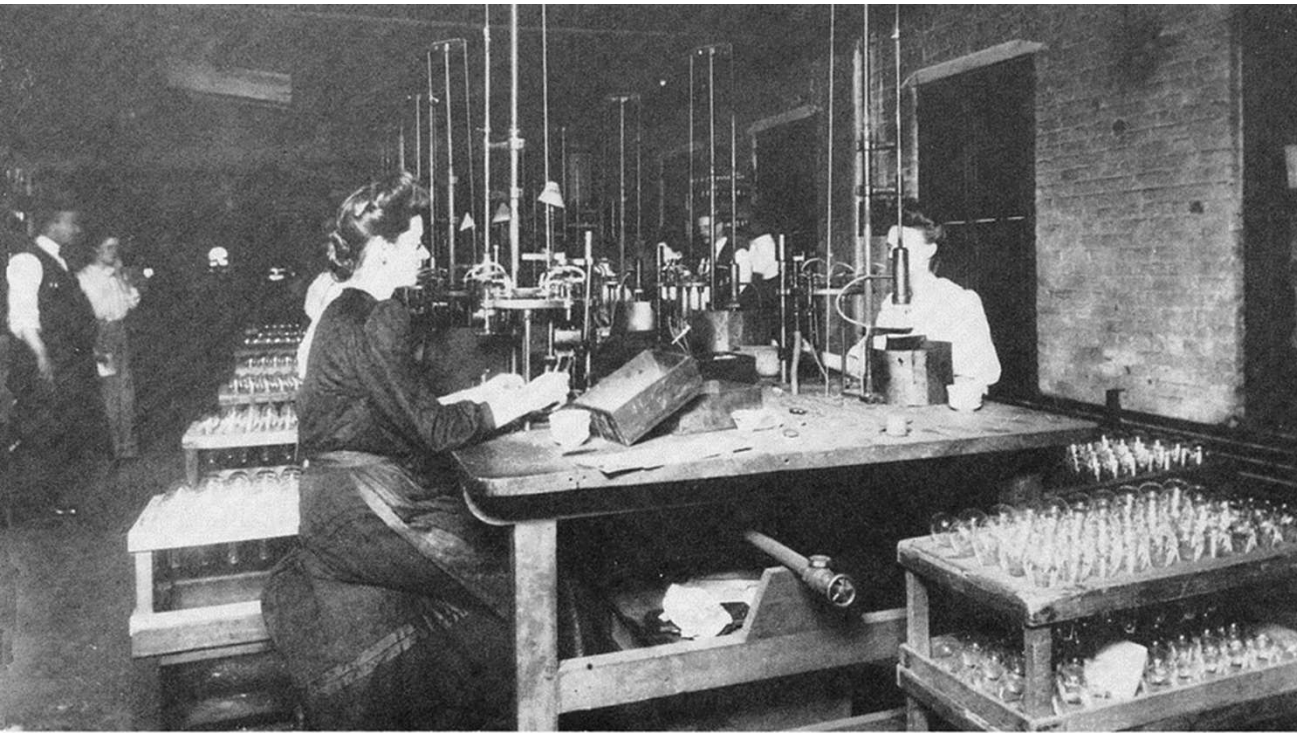


Girls of Heater One



GIRLS OF HEATER NUMBER ONE

Photo property of Mansfield Memorial Museum



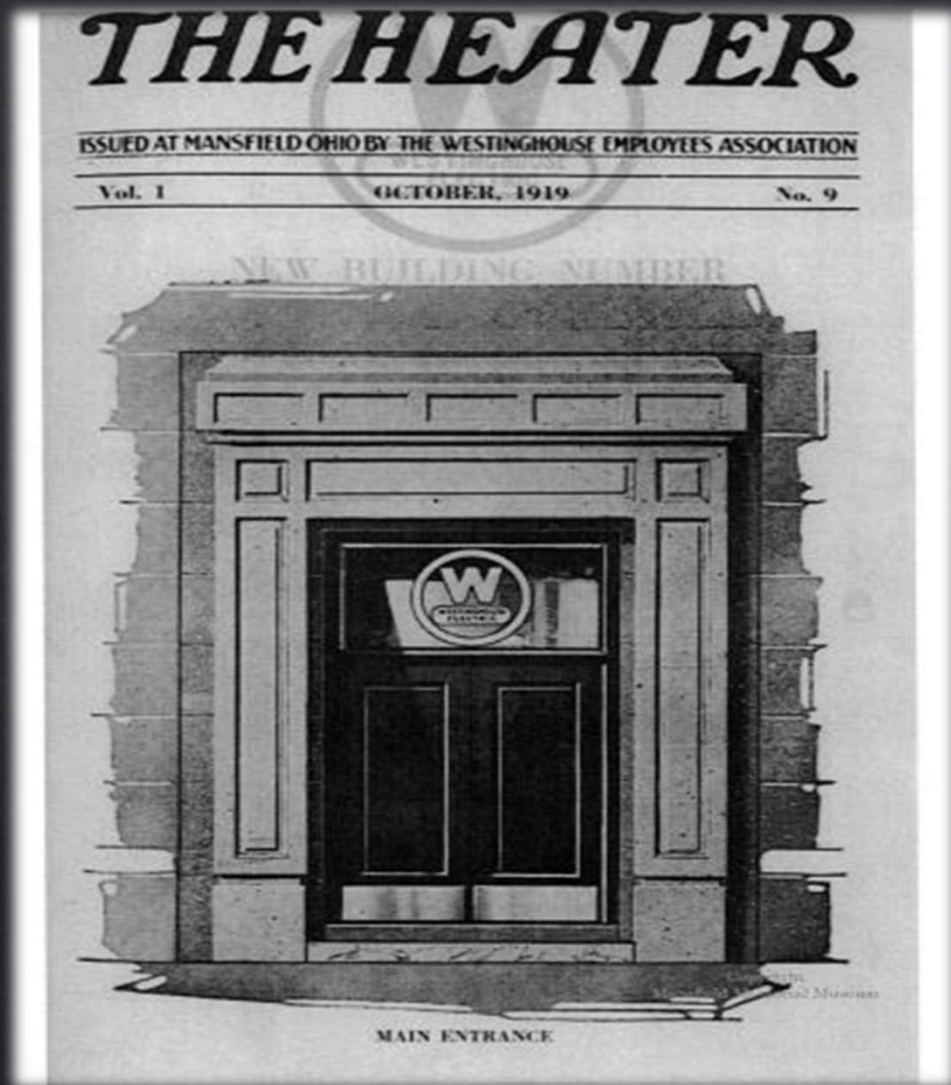
Westinghouse Group Goes to New York



The Westinghouse Girls

The Heater
1919

Picture property of Mansfield Memorial Museum



The Door Frame

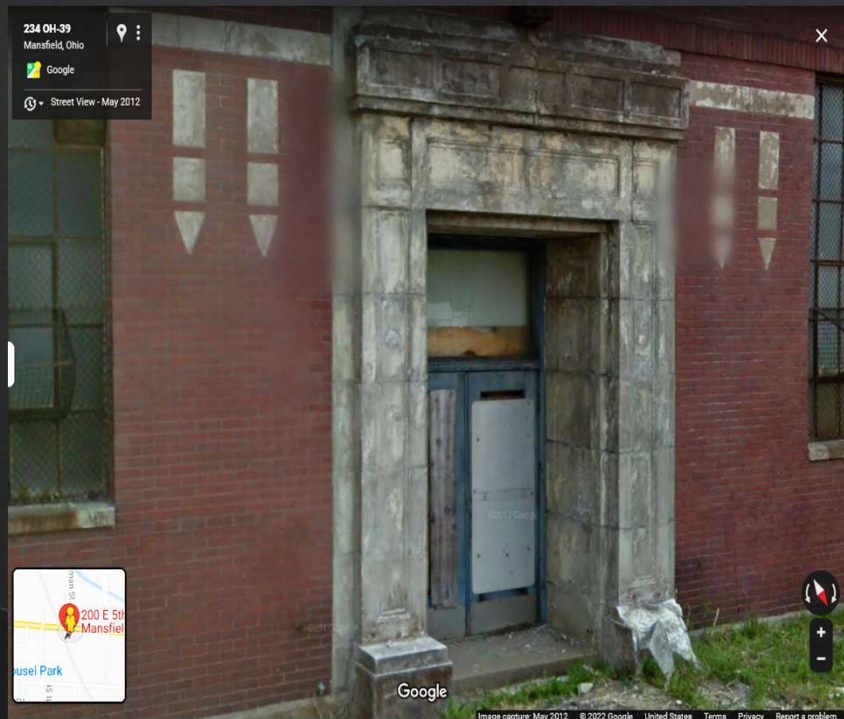


Employees Outside A-Bldg Entrance

Photos property of Mansfield Memorial Museum

Recent Images

2012



2022



Concept Proposal



Monument Elements

- Preserve original doorway on site
- Preserve original decorative elements
- Preserve original brick
- Plaque featuring historic connection to Westinghouse and the women's labor movement
- Landscaping
- Work in progress...



Next Steps

Engineering Study

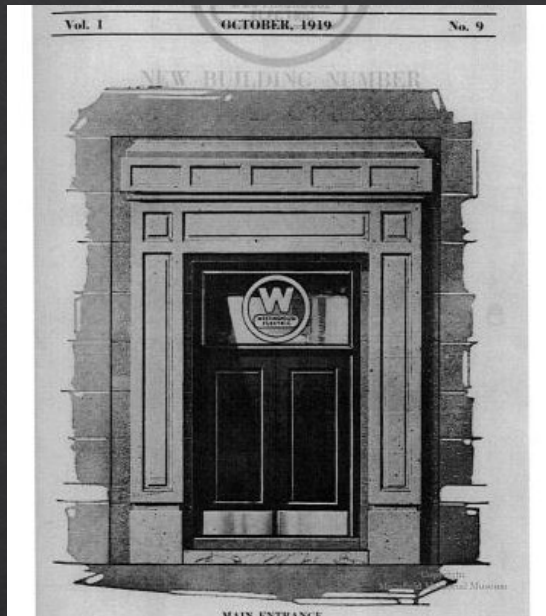
- Stabilization
- Cost

Submission to OSHPO

- Consulting Parties

(De)construction

- Preservation of Stone/brick
- Landscaping
- Use of space
- Historical Research
 - Plaque



Questions?

Thank you! 😊